

480000

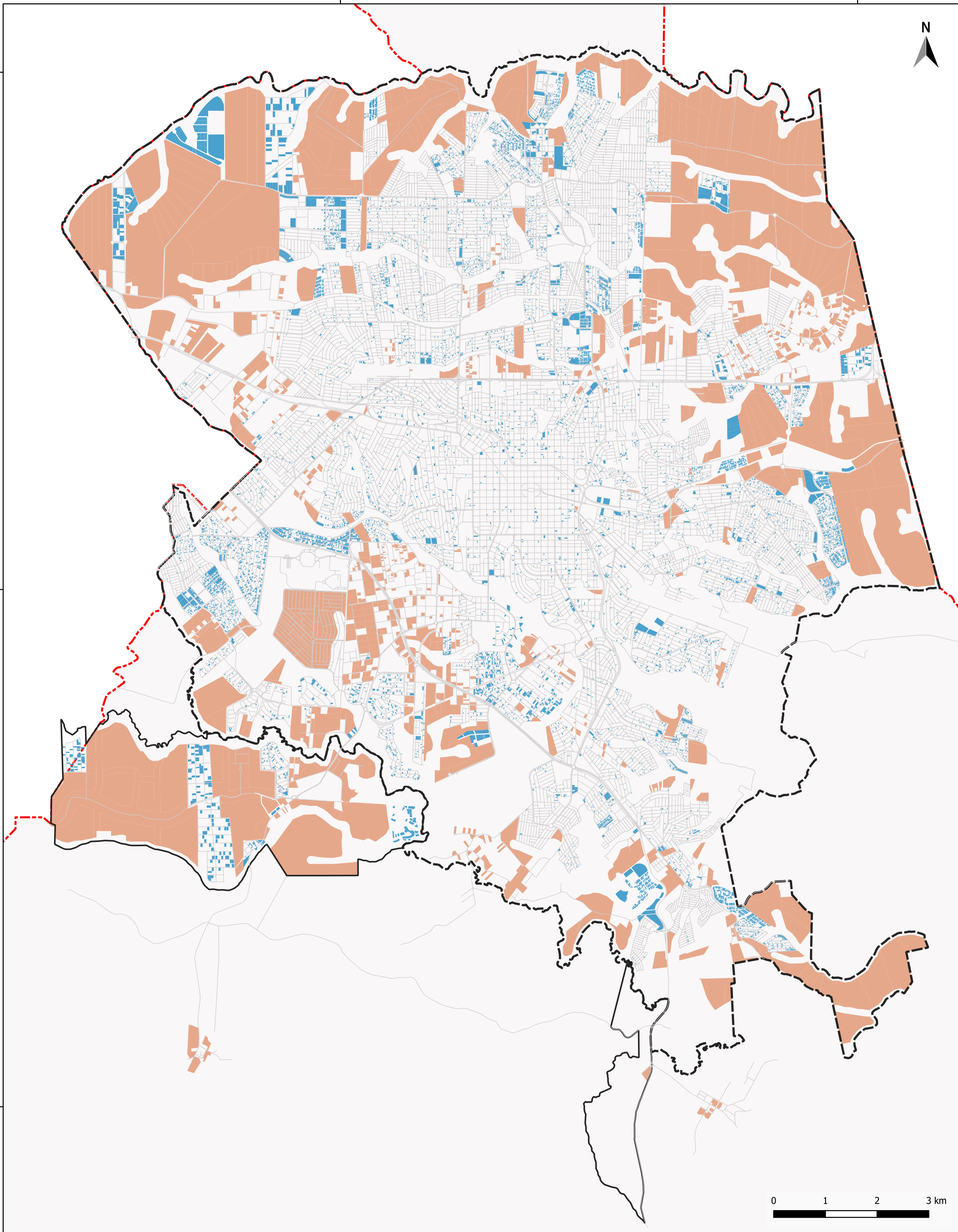
490000

7430000









7420000

7410000



### Vazios Urbanos - Distrito Sede e Espírito Santo

-  Limite do Município
-  Perímetro Urbano - Sede
-  Perímetro Urbano dos Distritos
-  Arruamento
-  Vazios parcelados
-  Vazios não parcelados

Fonte: IPPUL.  
 Org.: IPPUL, 2026  
 Sistema de Coordenadas: SIRGAS 2000 - UTM 22S

