

465000

480000

495000

510000



Uraí

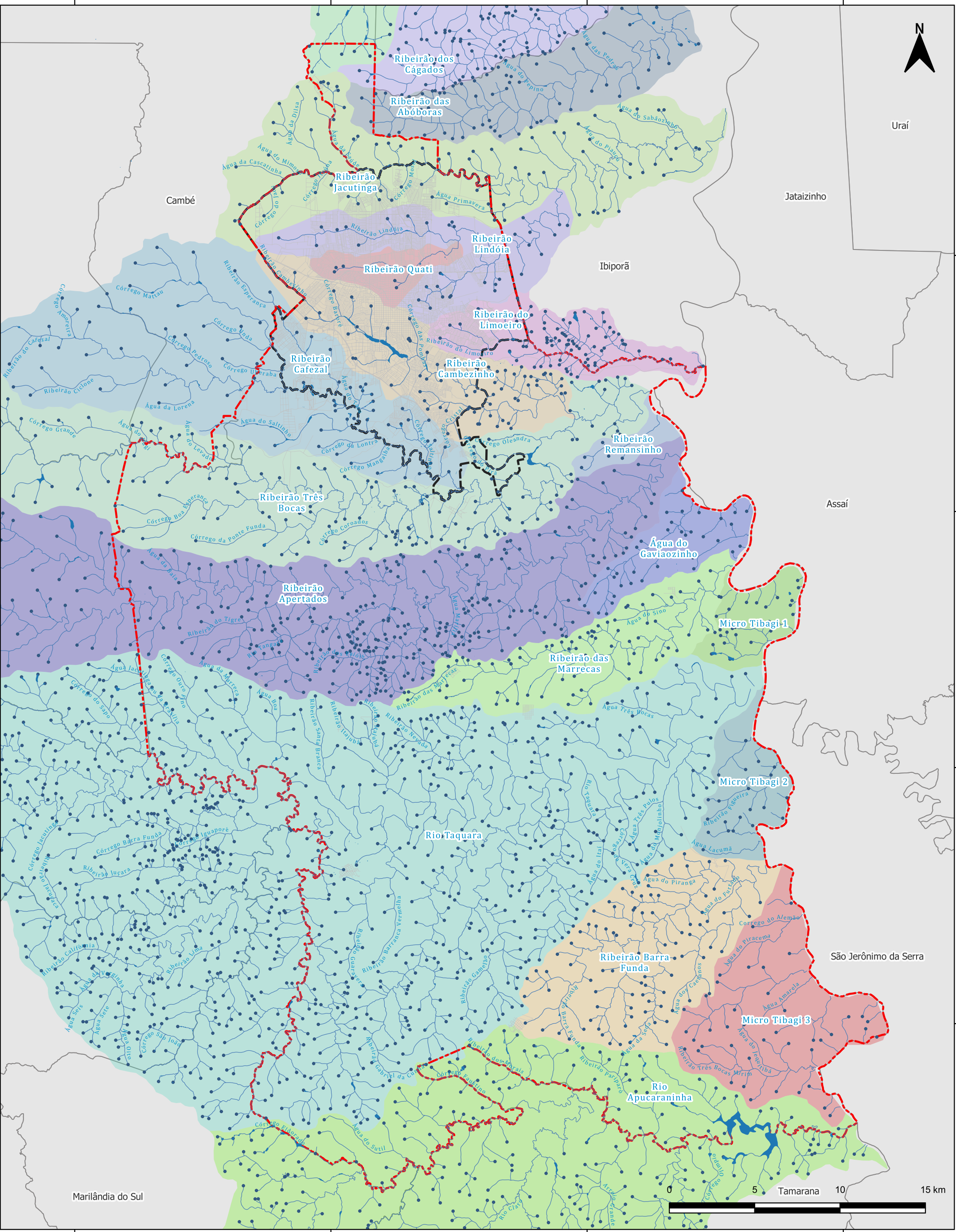
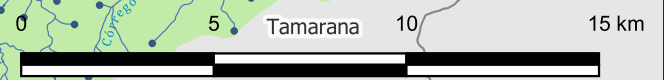
Jataizinho

Ibiporã








Assaí

São Jerônimo da Serra

Marilândia do Sul



Rede Hidrográfica do Município de Londrina

-  Limite do Município
-  Hidrografia
-  Bacias Hidrográficas
-  Municípios vizinhos
-  Nascentes
-  Massas D'água
-  Arruamento

Fonte: SIGLON, IPPUL.
 Org.: IPPUL, 2026
 Sistema de Coordenadas: SIRGAS 2000 - UTM 22S

